

Malachite Green Broth



Medium used for the isolation and cultivation of *Pseudomonas aeruginosa*.

• CONTENTS (Liter)

Peptic Digest of Animal Tissue	5.0 g
Meat Extract	3.0 g
Dipotassium Phosphate	0.37 g
Malachite Green	0.01 g
Final pH = 7.3 ± 0.2 at 25°C	

• PROCEDURE

Suspend 8.38 G of powder in 1 L of distilled or deionized water or suspend 25.14 G of powder in 1 L of distilled or deionized water for triple strength. Heat to boiling until completely dissolved. Sterilize by autoclave at 121°C for 15 minutes. Cool to 45 - 50°C in water bath. Mix well. Pour into tubes.

• INTERPRETATION

Malachite Green Broth is a medium used for the isolation and cultivation of *Pseudomonas aeruginosa*. Peptic digest of animal tissue and meat extract provide the carbon, nitrogen, vitamins and minerals. Dipotassium phosphate is the buffering agent. Malachite green suppresses the growth of bacteria except *Pseudomonas aeruginosa*.

• TECHNIC

Inoculate the specimen using a sterile needle to the single strength medium or mix 2 parts of specimen and 1 part of the triple strength medium. Incubate at 35 ± 2°C for 18 - 24 hours up to 48 hours. Refer appropriate references for recommended test procedure.

• QUALITY CONTROL FOR USE

Dehydrated medium

Appearance: free-flowing, homogeneous

Color: light beige

Prepared medium

Appearance: clear to slightly opalescent

Color: sky blue

Incubation conditions: 35 ± 2°C / 18 - 24 hours up to 48 hours

Microorganism	ATCC	Growth
<i>Pseudomonas aeruginosa</i>	27853	good
<i>Pseudomonas aeruginosa</i>	9027	good
<i>Escherichia coli</i>	25922	inhibited

• STORE

The powder is very hygroscopic. Store the powder at room temperature, in a dry environment, in its original container tightly closed and use it before the expiry date on the label. Store prepared medium at 2 - 8°C.

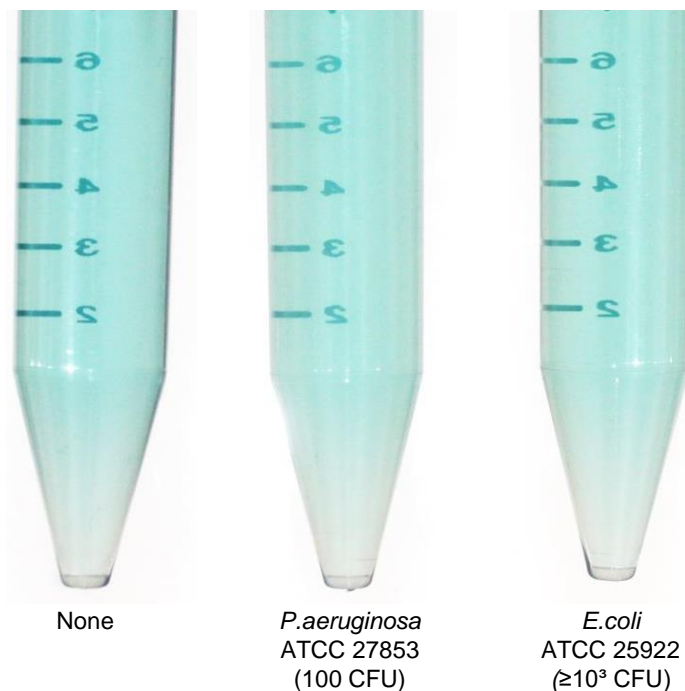
• REFERENCES

1. Habs H. and Kirschner K. H, 1943, Z.Hyg., 124: 557-578
2. Schubert R., Blum U., Zbl. Bakt. Hyg.I. Orig. B., 158, 583 (1974)

• PACKAGE

Cat. No : MB-M2202 Malachite Green Broth	500 G
---	-------

• MICROBIAL CULTURE IMAGES



Incubation conditions : 35 ± 2°C 18 - 24 hours up to 48 hours